

# Quick Start: Student User Guide

January 30, 2026

Need help? Email us at: [help@mored.tech](mailto:help@mored.tech)

# Download the Application



Download Link:

<https://unisa.mored.tech/download>

(Screenshots may vary. Always use the latest version.)

**Please download the version that matches your operating system.**

Windows users should download the Windows version, while Mac users should select the appropriate version based on your chip type.

## For Windows:

- Operating System: Windows 10 64-bit or higher
- Processor: i5–1135G7 @ 2.4GHz or higher
- You may need to install the following dependencies:  
Microsoft Visual C++ 2019 Redistributable
- Memory: 8GB RAM or more
- Storage: At least 20GB free space

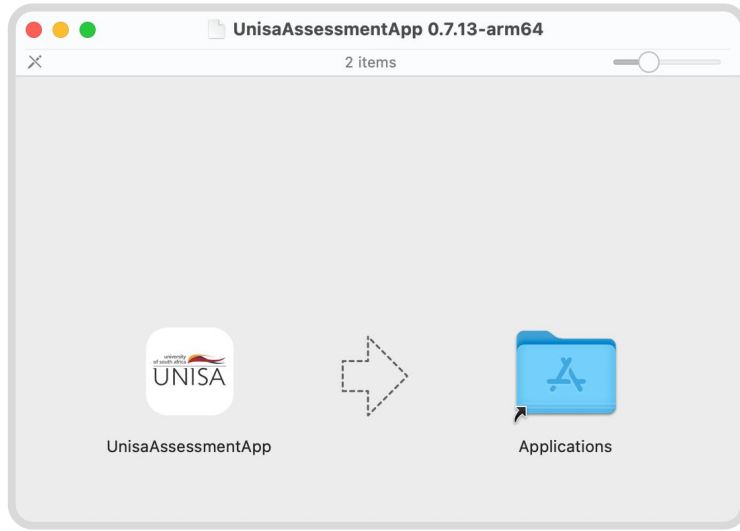
## For macOS:

- Operating System: macOS 12 (Monterey) or later
- RAM: 8GB or more
- Available Storage: Minimum 20GB free space

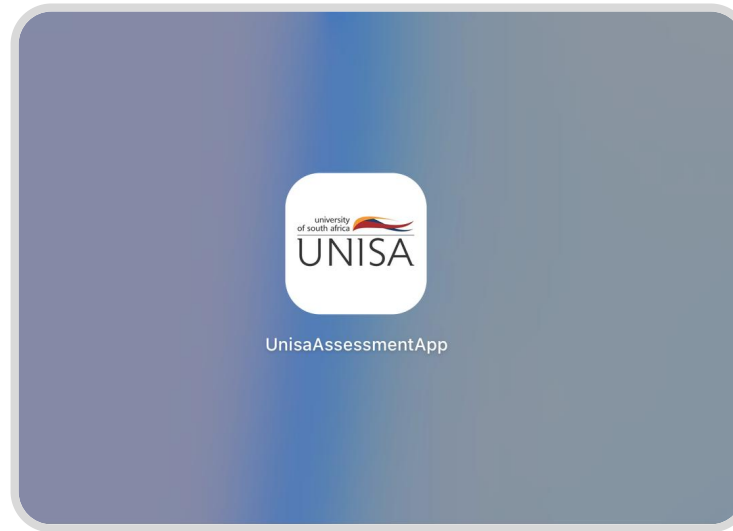
**Please ensure your device has the following:**

- Front-facing camera (for identity verification)
- Stable internet connection (for downloading test papers and submitting answers)
- Keyboard
- Mouse or trackpad

## macOS Installation:



1.  
Drag the application to the  
Applications folder



2  
wait for the installation to complete,  
then open the application



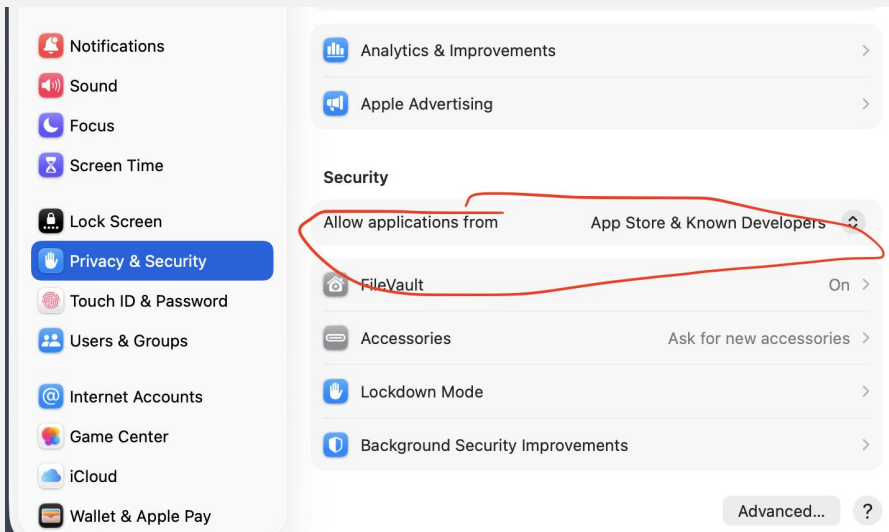
3  
click "Open"

# macOS Installation:

If you see: "UnisaAssessmentApp" can't be opened because it is from an unidentified developer.

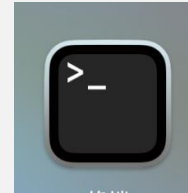
## Solutions1: Through System Settings (Recommended)

- Open System Settings > Privacy & Security
- Find the message: "UnisaAssessmentApp was blocked from use"
- Click the "Open Anyway" button next to it
- Click "Open" in the pop-up window



## Solutions2: You can temporarily allow apps from anywhere

- Open Terminal:



- Enter the following command: `sudo spctl --master-disable`



- Press Enter

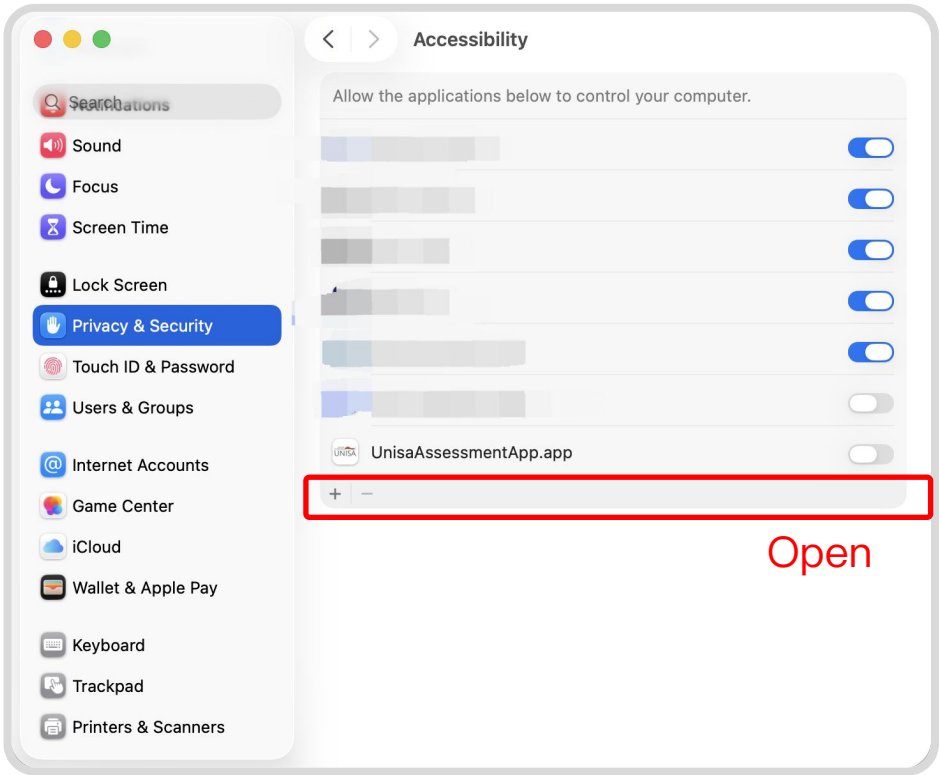
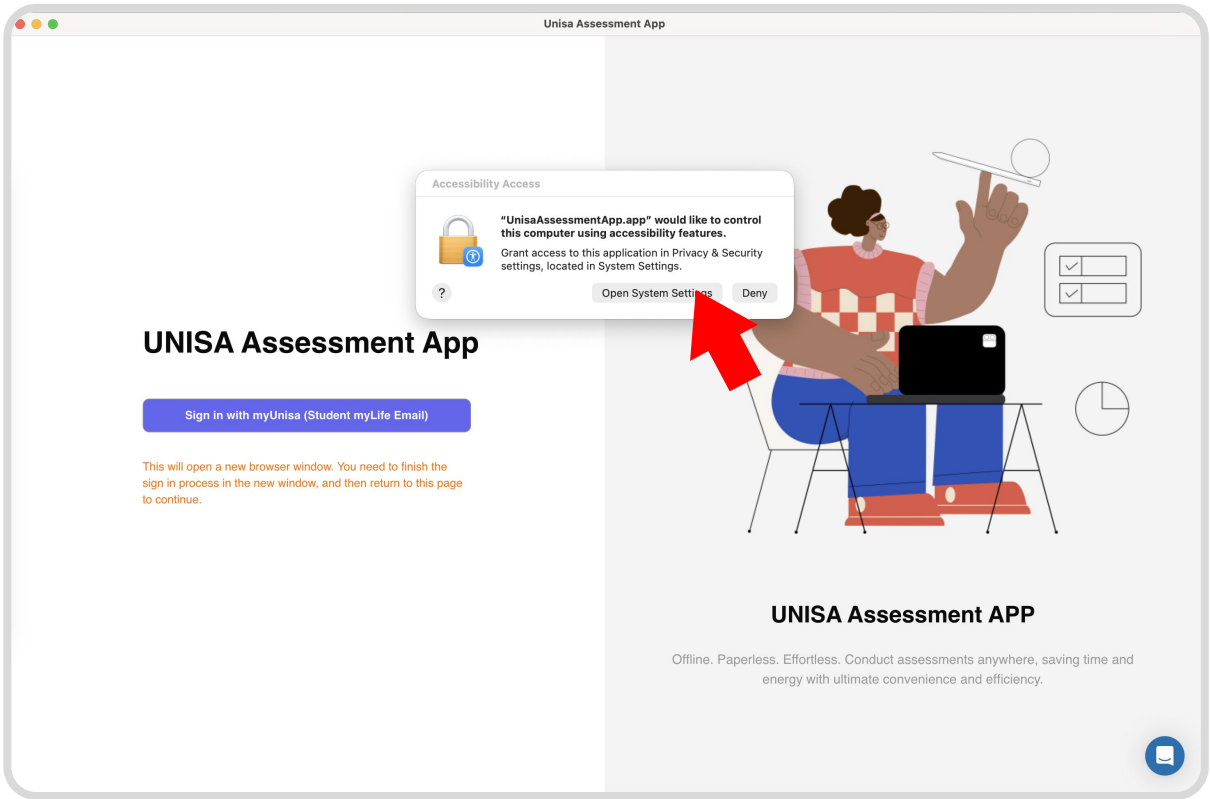
- Enter your administrator password (it won't be displayed)



- Press Enter again

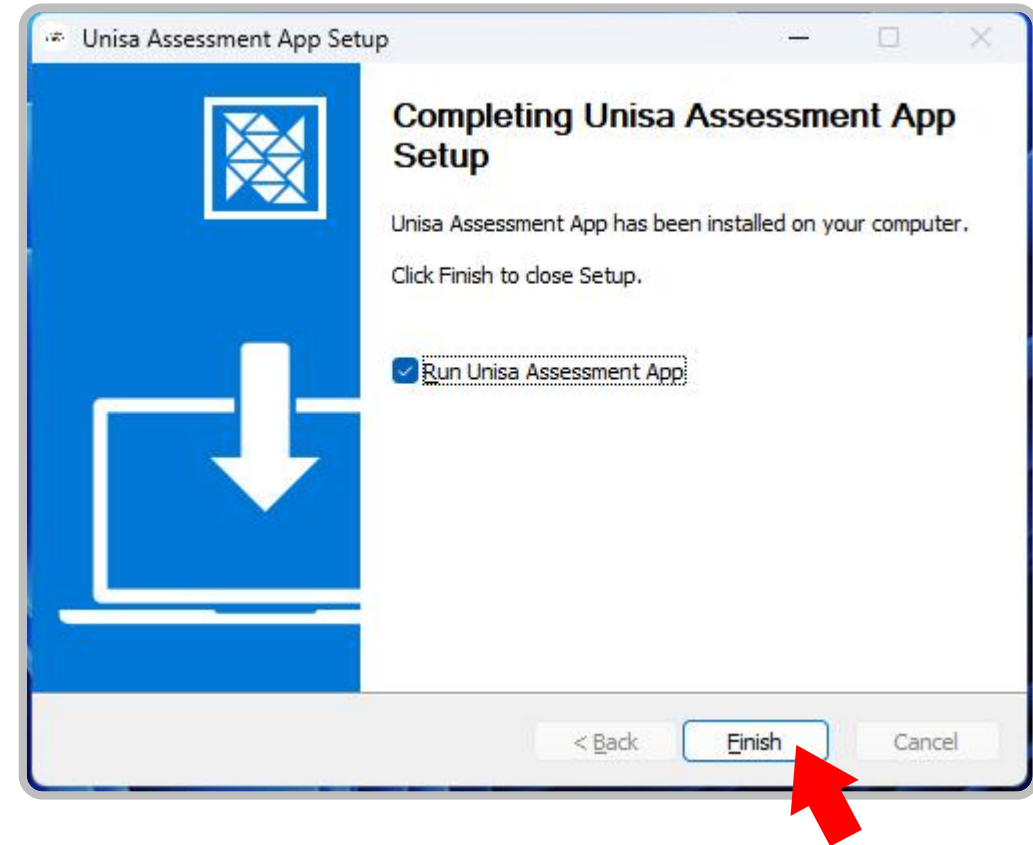
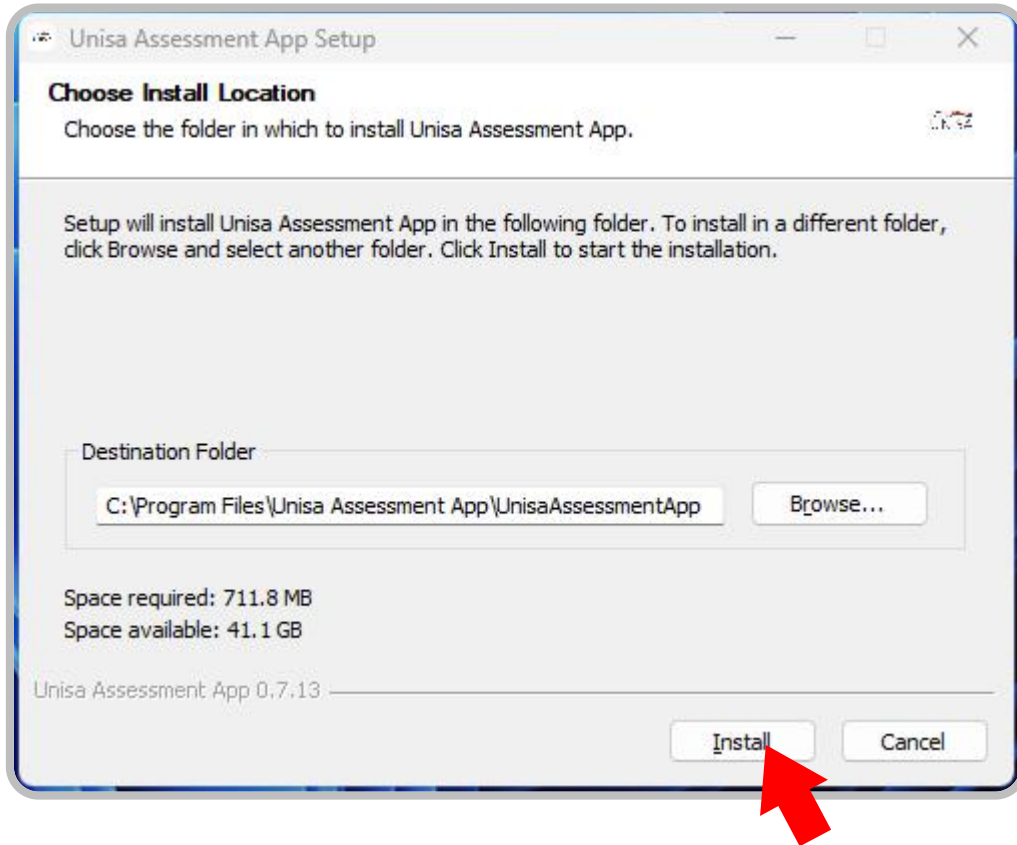


# macOS Permission Settings

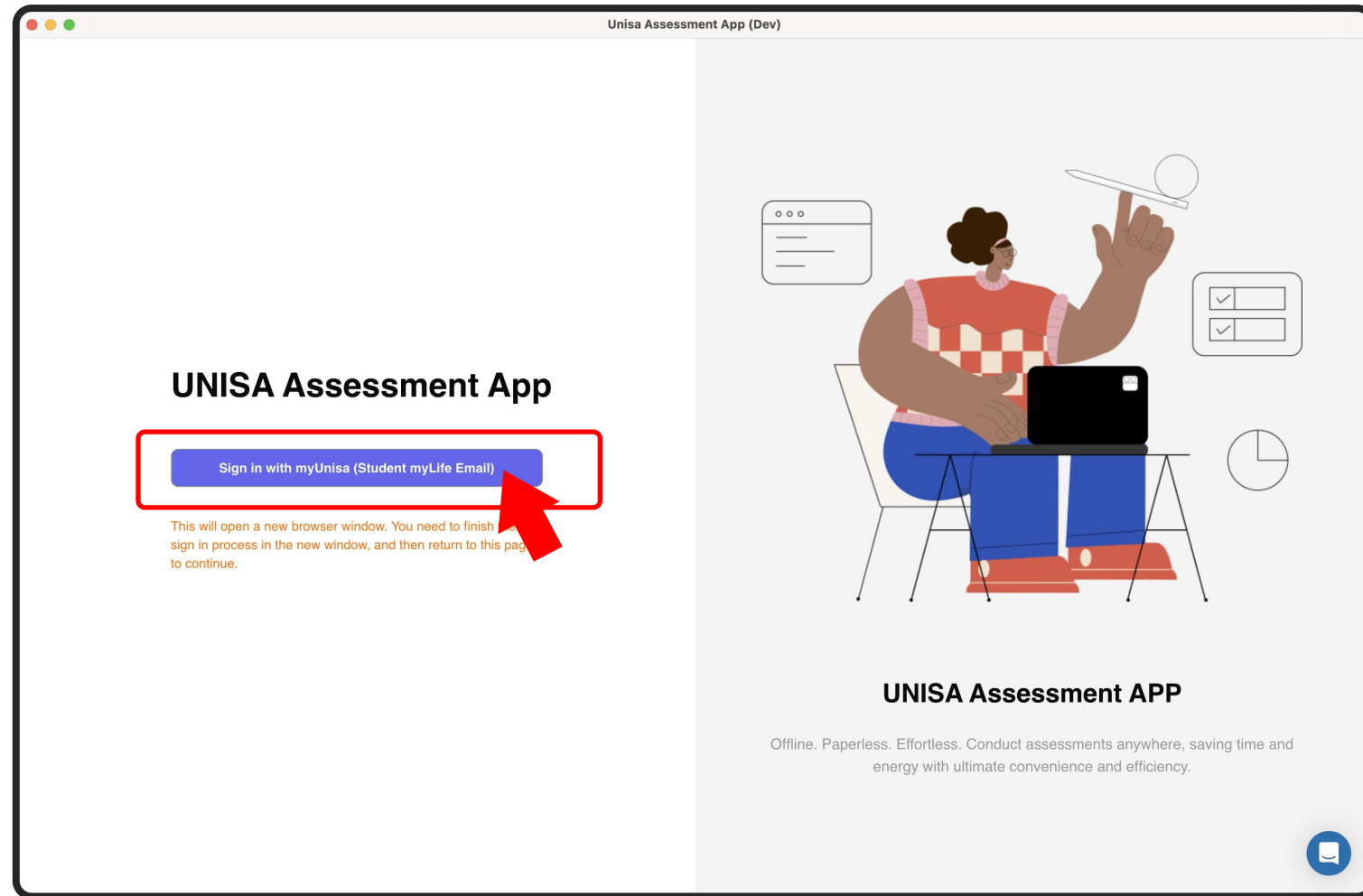


When opening the app for the first time, you will be prompted for permissions.  
Please grant them and click "Open System Settings".

## Windows Installation:



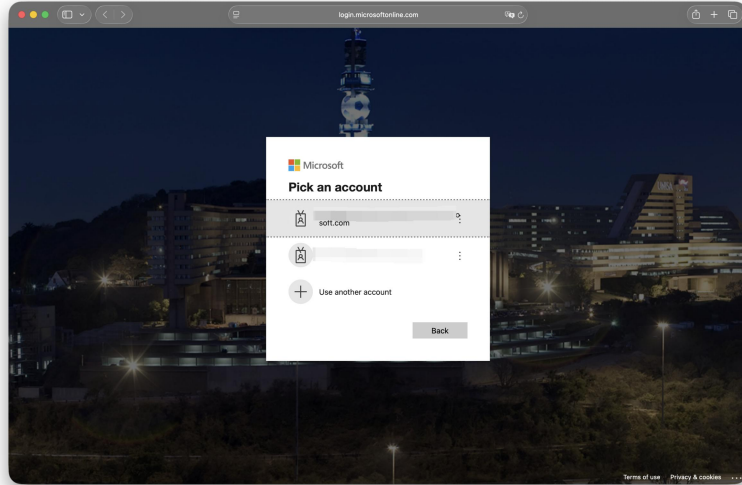
# Login



Please click the "Sign in with myUnisa (Student myLife Email)" button below

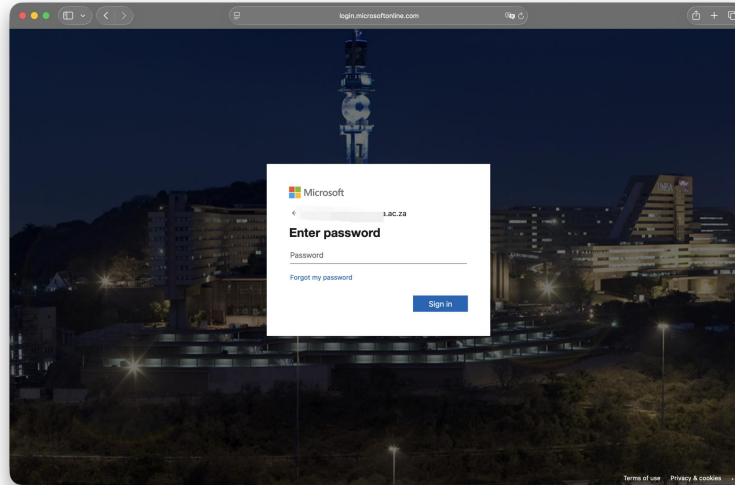
# Login

After clicking account login, you will be redirected to a webpage.



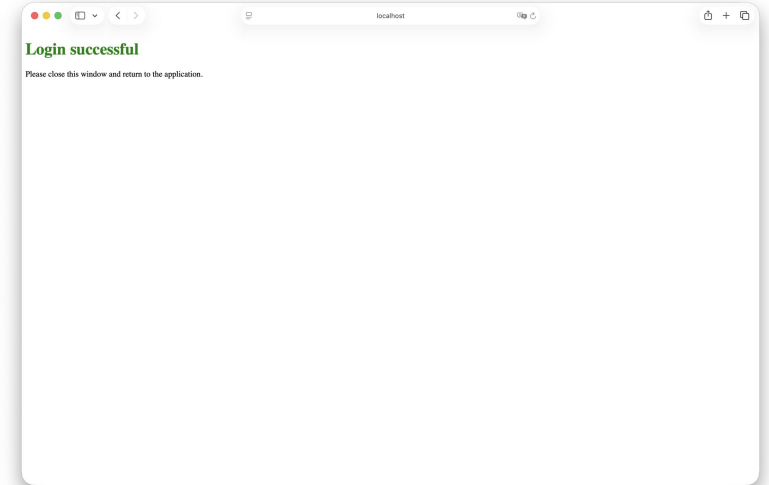
1

Please select an account or enter  
your account information.



2

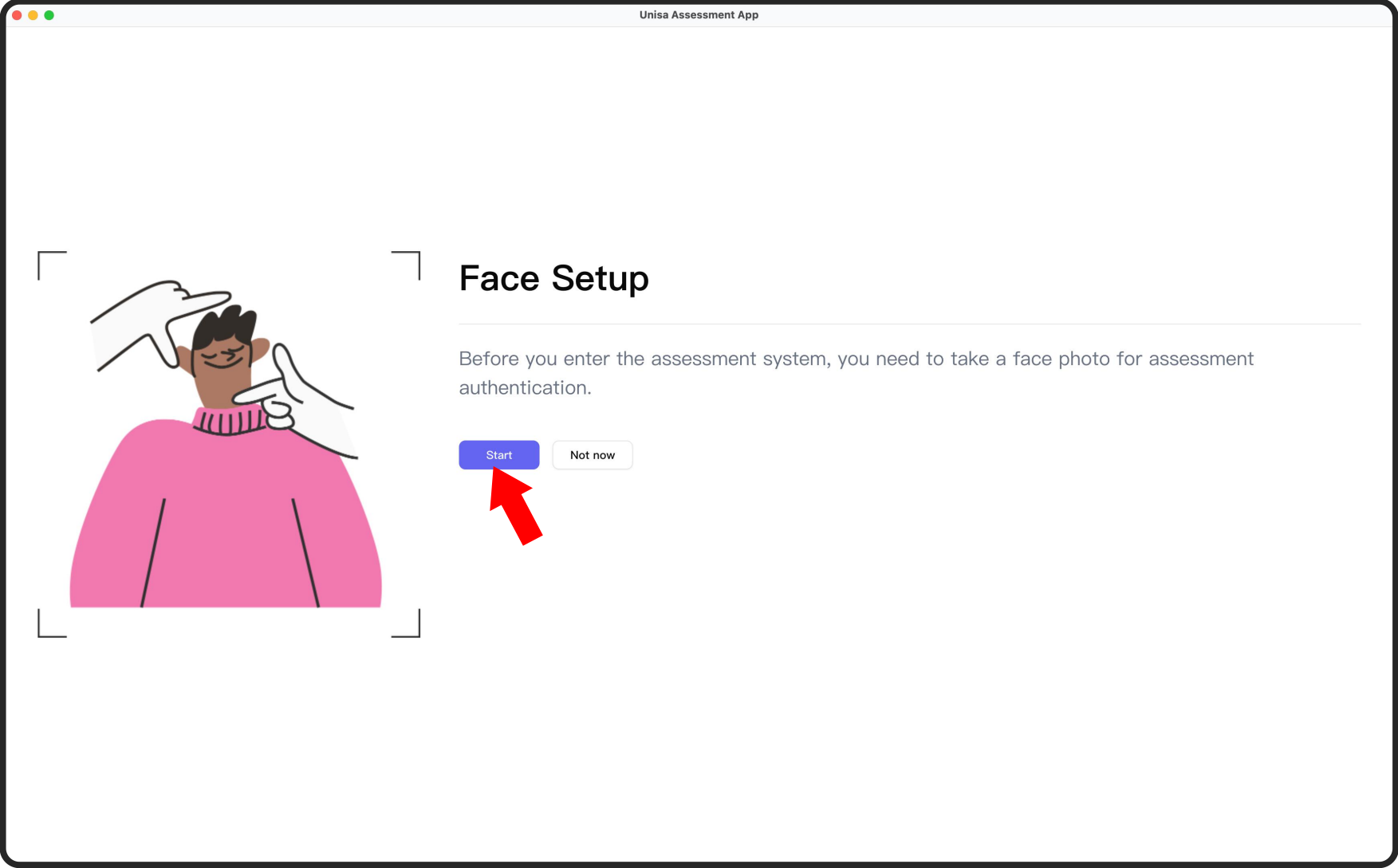
Enter password



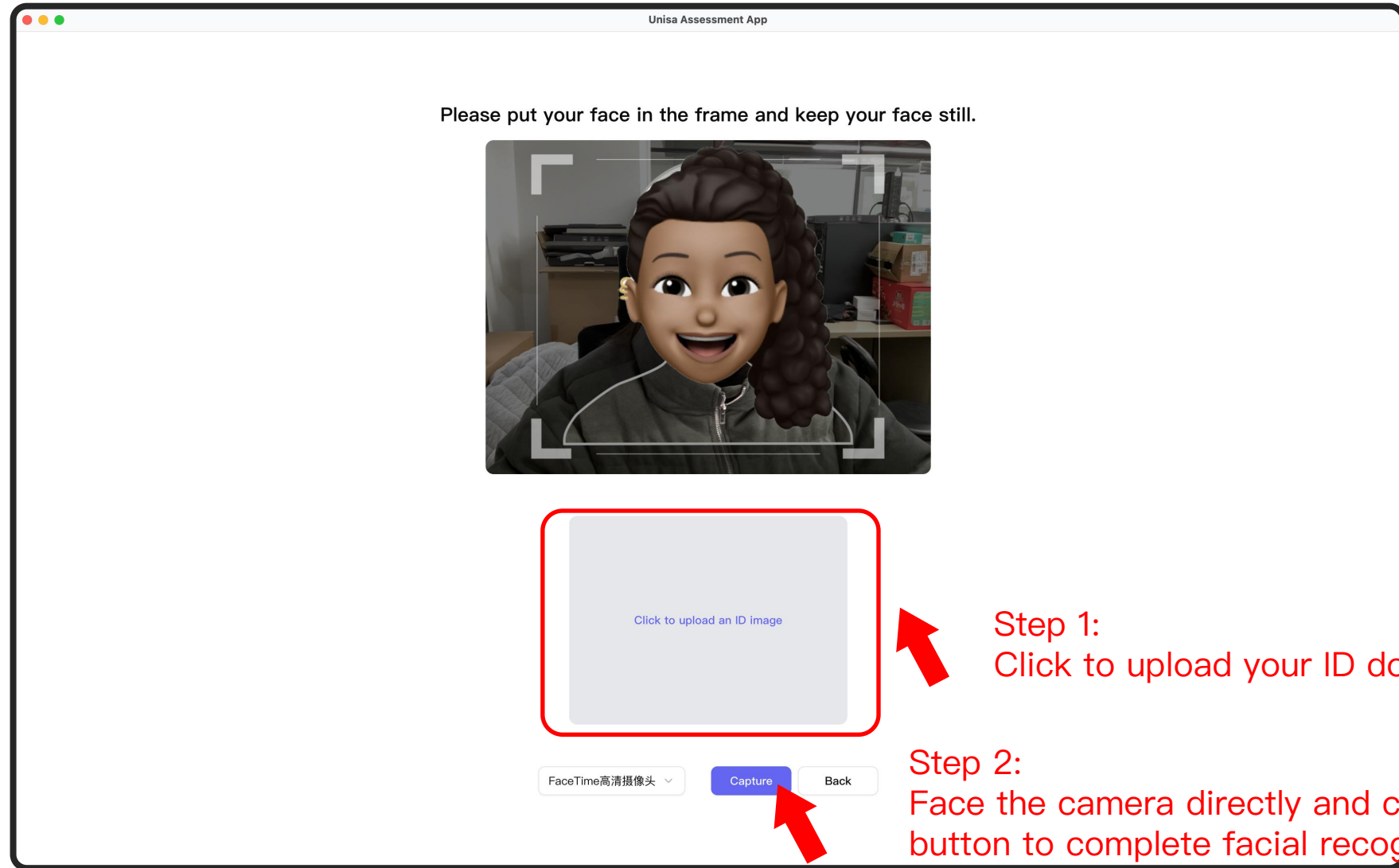
Login successful!

You can now close the browser  
and return to the app to continue.

# Face Setup



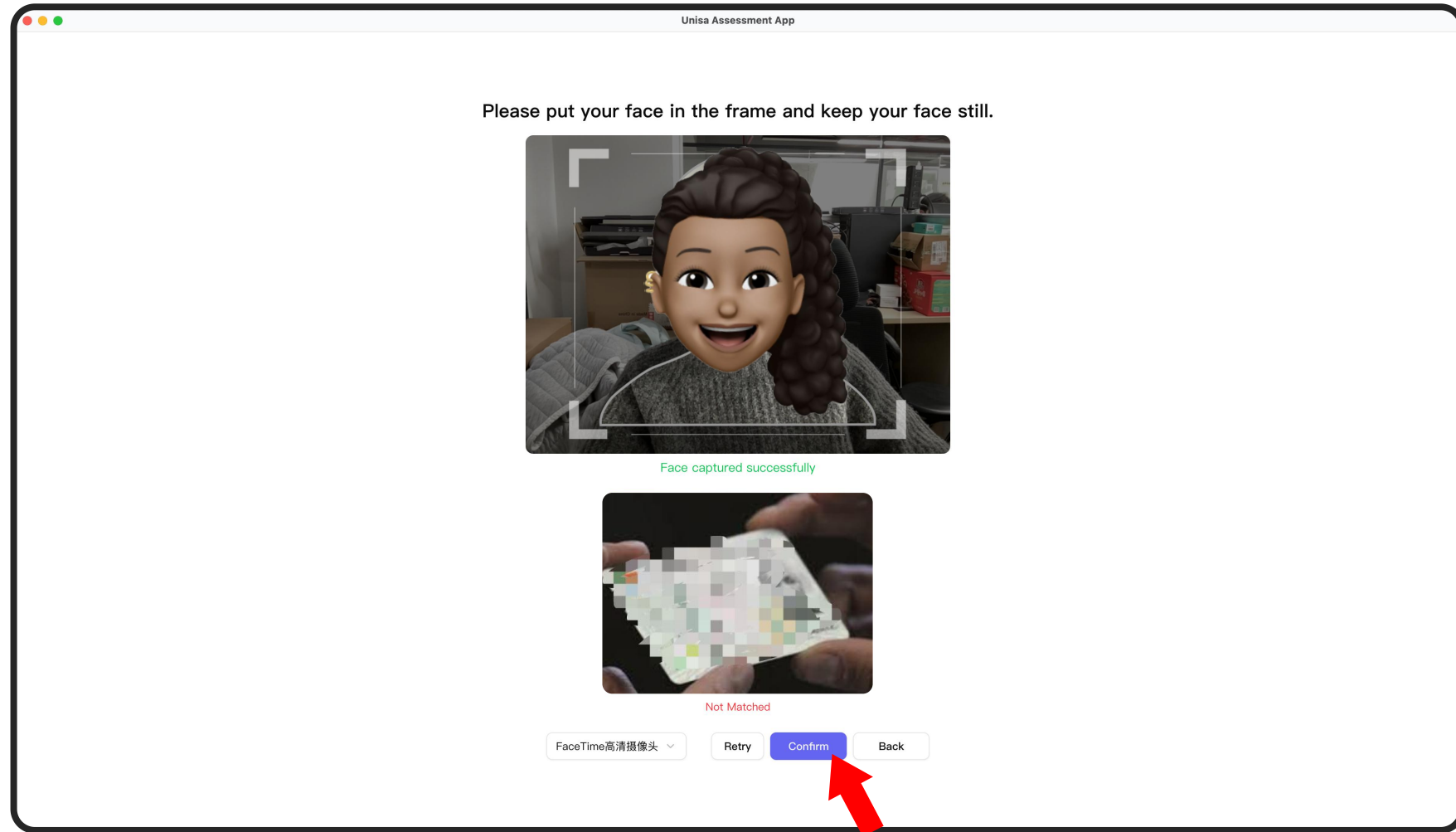
# Identity Verification



Authentication takes time and may require 2–3 minutes depending on your network.  
Please wait for the page to load completely.

# Identity Verification Failed (NOT Matched) Solutions

If you haven't encountered this issue, please skip this section



Identity verification failed. Your uploaded information has been received by the system. We will conduct a manual review in the background. Please click "Confirm" to continue with your exam – this will not affect your test. Alternatively, click "Retry" to upload your ID photo again.

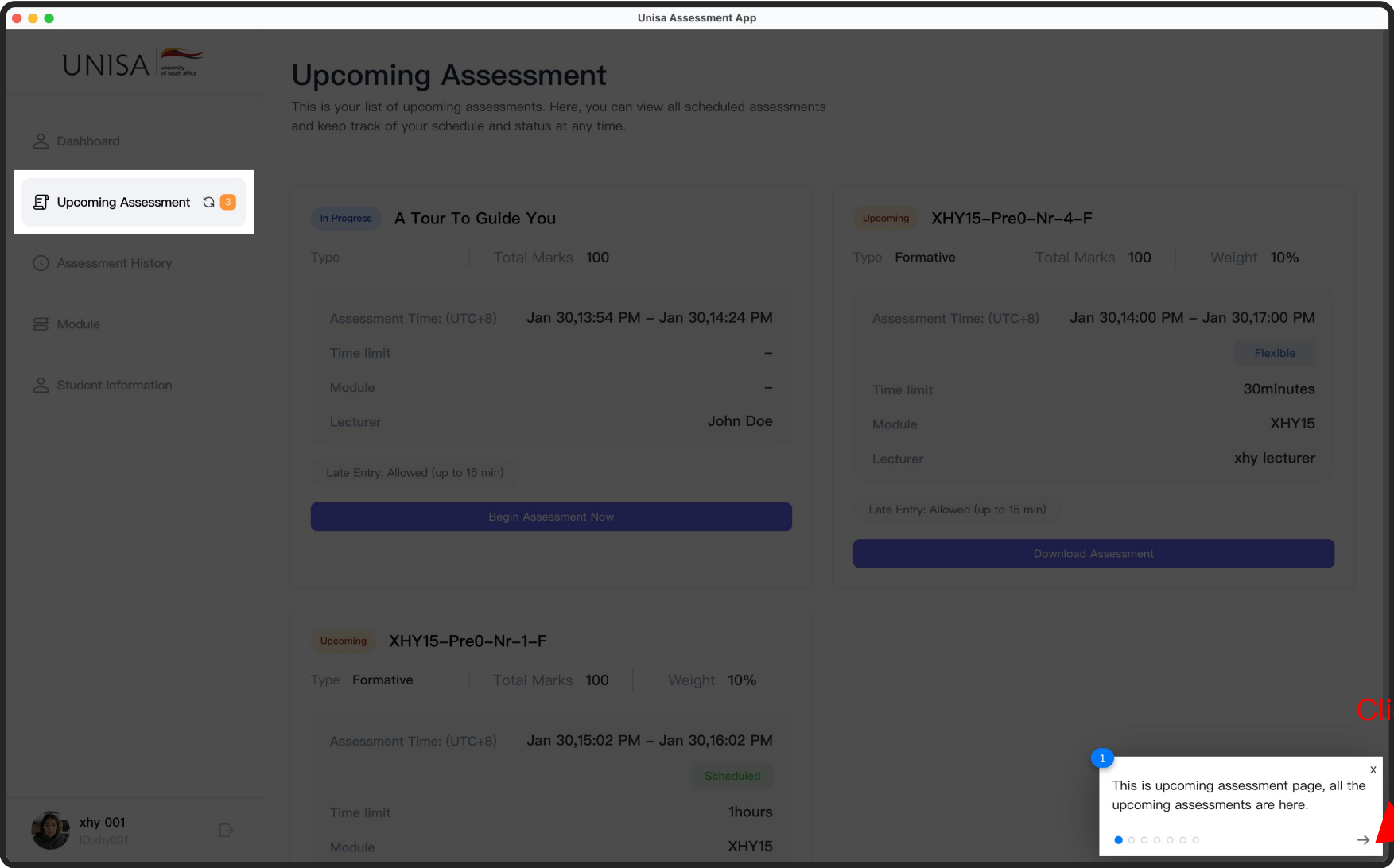
# Complete Facial Verification



After successful matching, click the "Confirm" button



# System Operation Guide



This is a tutorial to help you familiarize yourself with the assessment interface and navigation.

# Download Assessment

UNISA

university of south africa

Dashboard

Upcoming Assessment

Assessment History

Module

Student Information

xhy 001

ID:xhy001

Unisa Assessment App

Upcoming Assessment

This is your list of upcoming assessments. Here, you can view all scheduled assessments and keep track of your schedule and status at any time.

Upcoming XHY15-Pre0-Nr-4-F

Type Formative

Total Marks 100

Weight 10%

Assessment Time: (UTC+8) Jan 30,14:00 PM – Jan 30,17:00 PM

Flexible

Time limit 30minutes

Module XHY15

Lecturer xhy lecturer

Late Entry: Allowed (up to 15 min)

Download Assessment

Upcoming XHY15-Pre0-Nr-1-F

Type Formative

Total Marks 100

Weight 10%

Assessment Time: (UTC+8) Jan 30,15:02 PM – Jan 30,16:02 PM

Scheduled

Time limit 1hours

Module XHY15

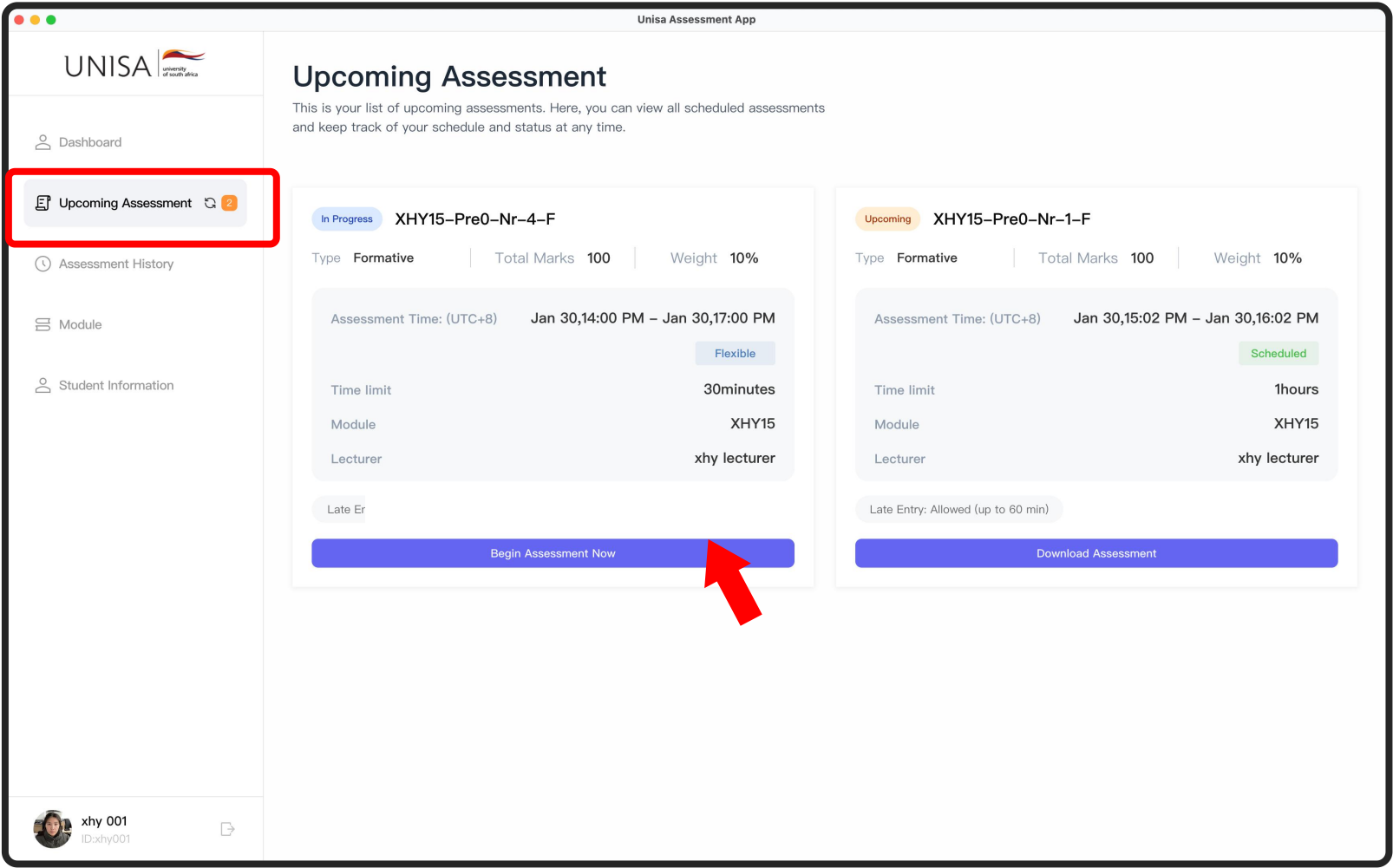
Lecturer xhy lecturer

Late Entry: Allowed (up to 60 min)

Download Assessment

On the "Upcoming Assessments" page, locate your assessment and click to download.

# Begin Answering



**Please note the assessment type:**

## **Flexible Assessment**

Available: 9:00 AM – 3:00 PM (example)

Duration: 2 hours

Important: You can start anytime during this window, but **MUST** finish by 3:00 PM.

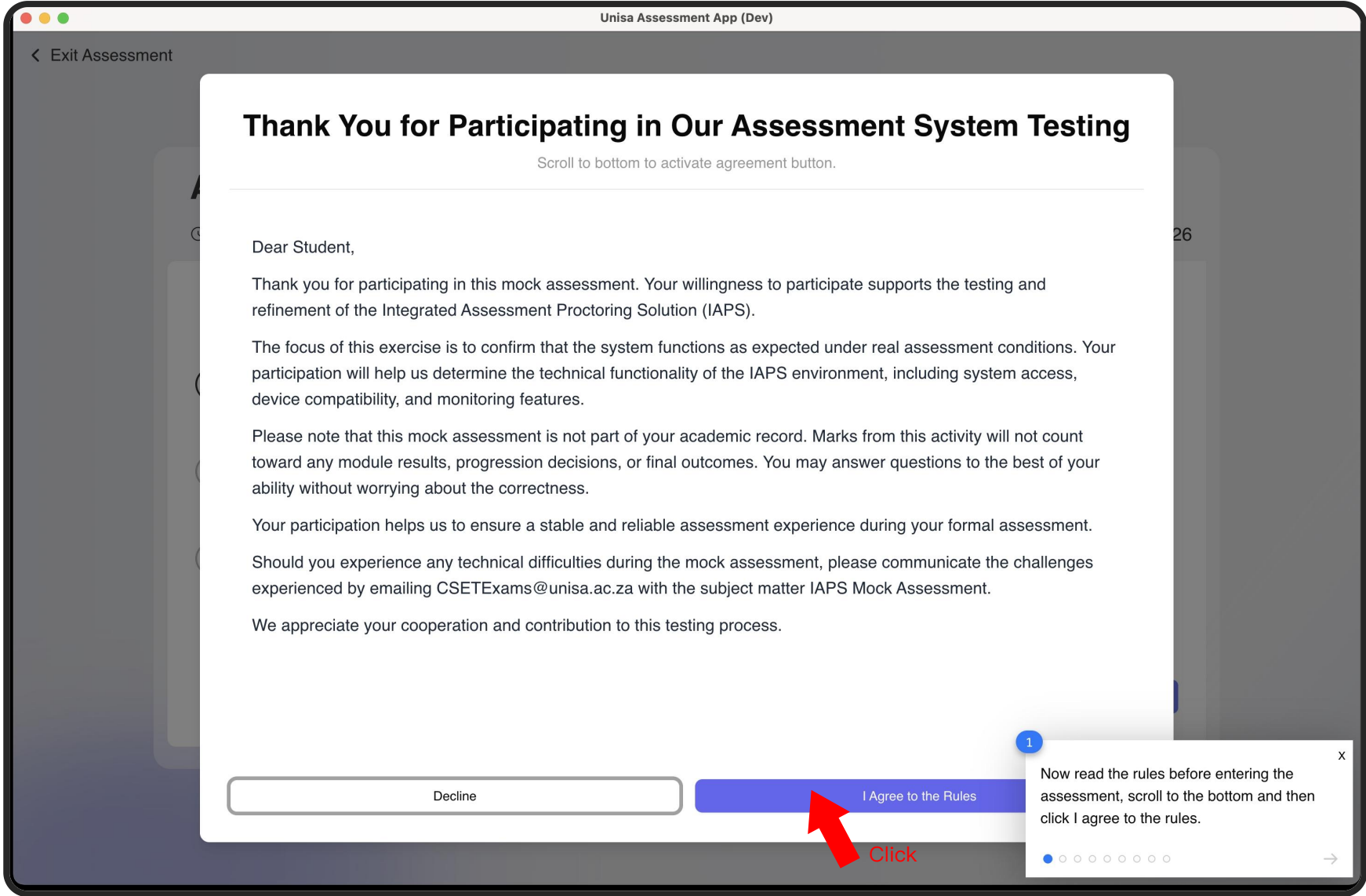
Starting late means less time to complete.

## **Scheduled Assessment**

Fixed time: 9:00 AM – 11:00 AM (example)

Important: You must start at 9:00 AM sharp and finish by 11:00 AM.

# Read Assessment Rules



Please read the assessment rules completely.  
After scrolling to the bottom of the page, the confirmation button will be activated.

# Read

Unisa Assessment App

< Exit Assessment

### Honesty Declaration

Please read the following declaration carefully.


By submitting this assessment, I declare that:

- ☒ The work I have submitted is my own and was completed without unauthorised assistance.
- ☒ I did not communicate with any person, shared answers, or received help during the assessment, except through officially approved support channels
- ☒ I did not use unauthorised materials, devices, or software, including generative Artificial Intelligence (AI) tools, except where explicitly permitted in the assessment instructions
- ☒ I complied with all invigilation and proctoring requirements, including maintaining a visible and unobstructed webcam feed for the duration of the assessment
- ☒ I have read and understand that any violation of the online assessment rules may result in my marks being withheld and disciplinary action being taken under the Student Disciplinary Code

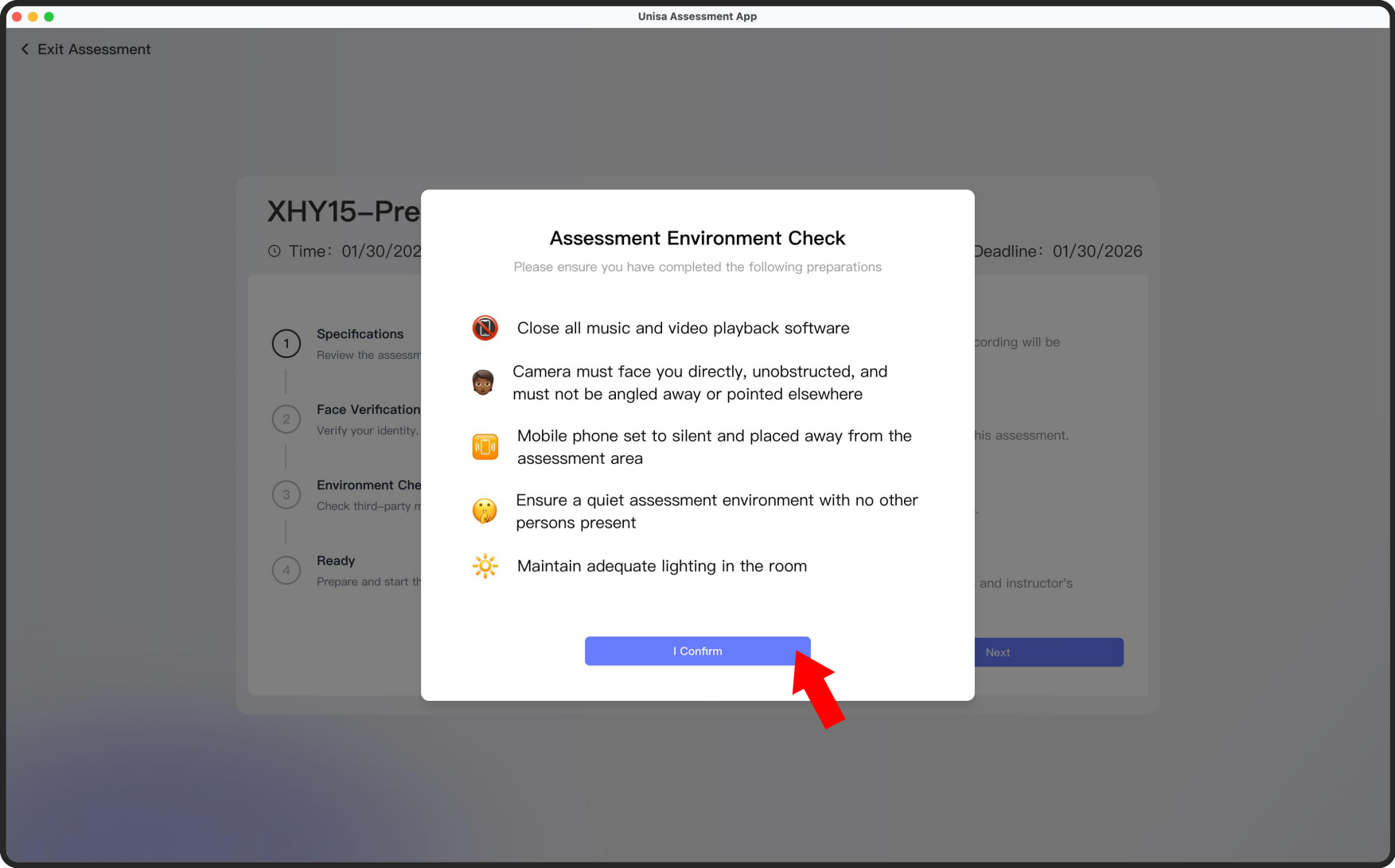
☒ I confirm that I have read and understood this pledge and that this submission complies with the above declaration

Disagree and Exit

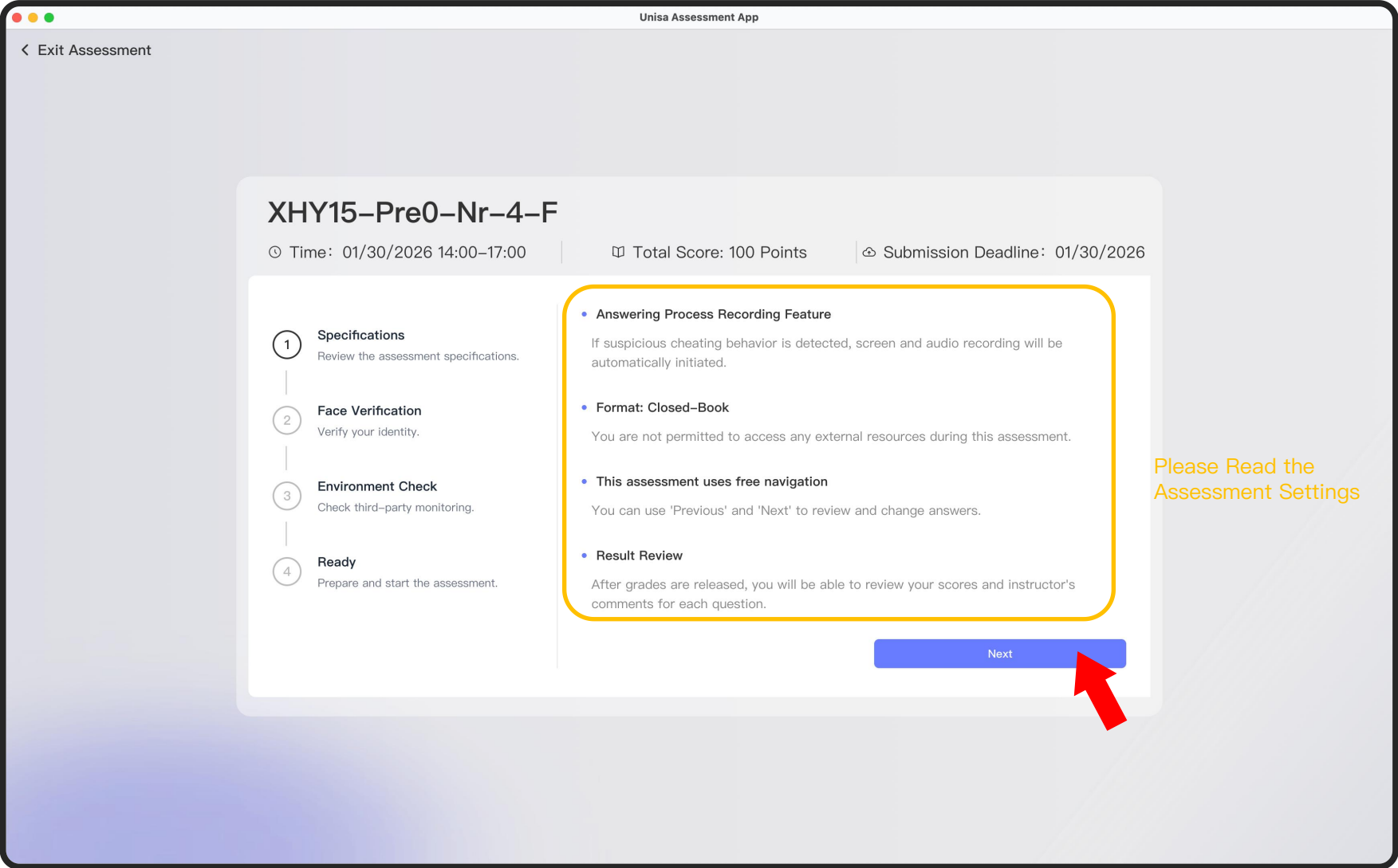
Agree and Continue

 Clicking Agree and Continue indicates your commitment to uphold academic integrity

# Environment Check

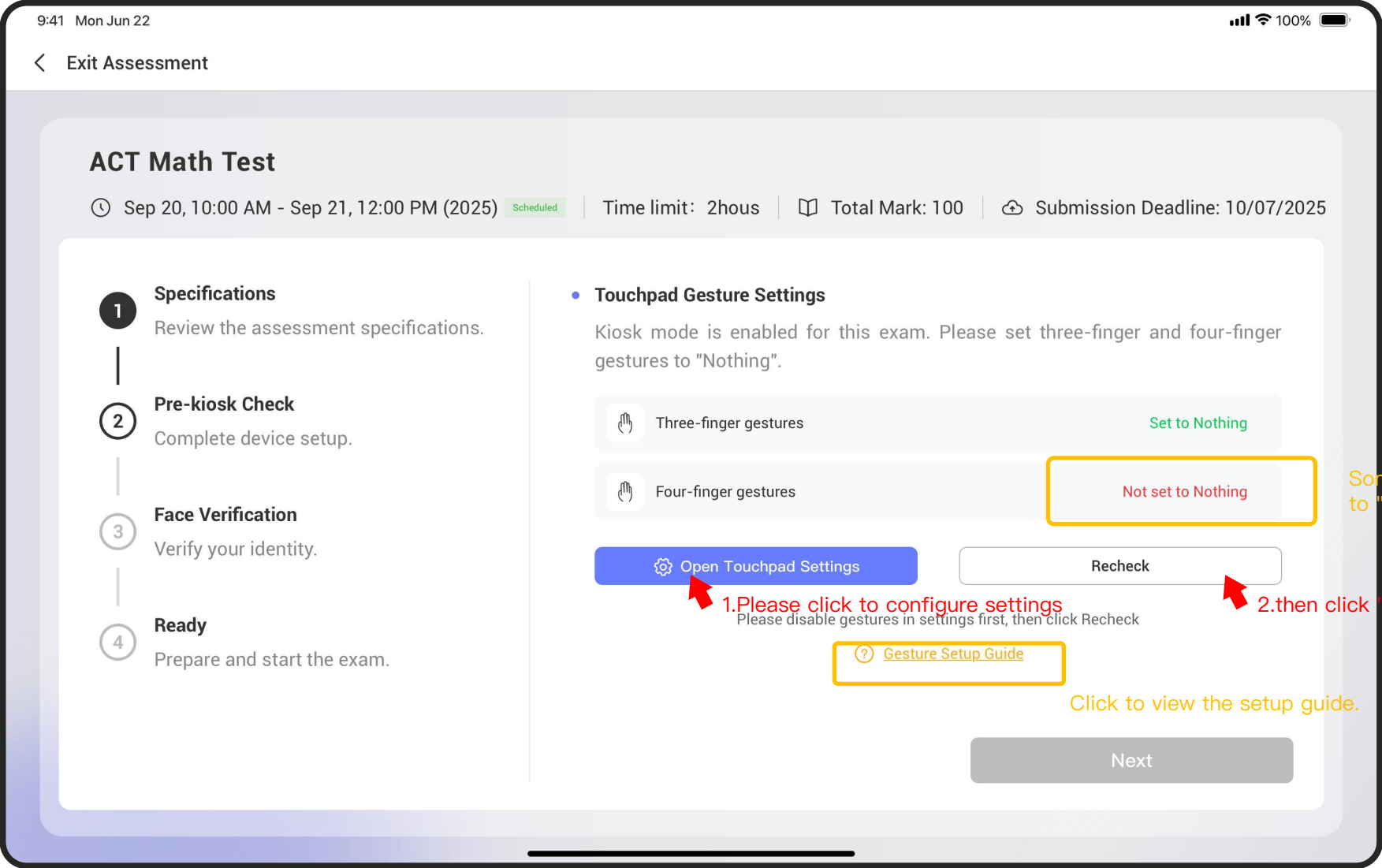


# Review the assessment specifications



# Touchpad Gesture Verification Failed

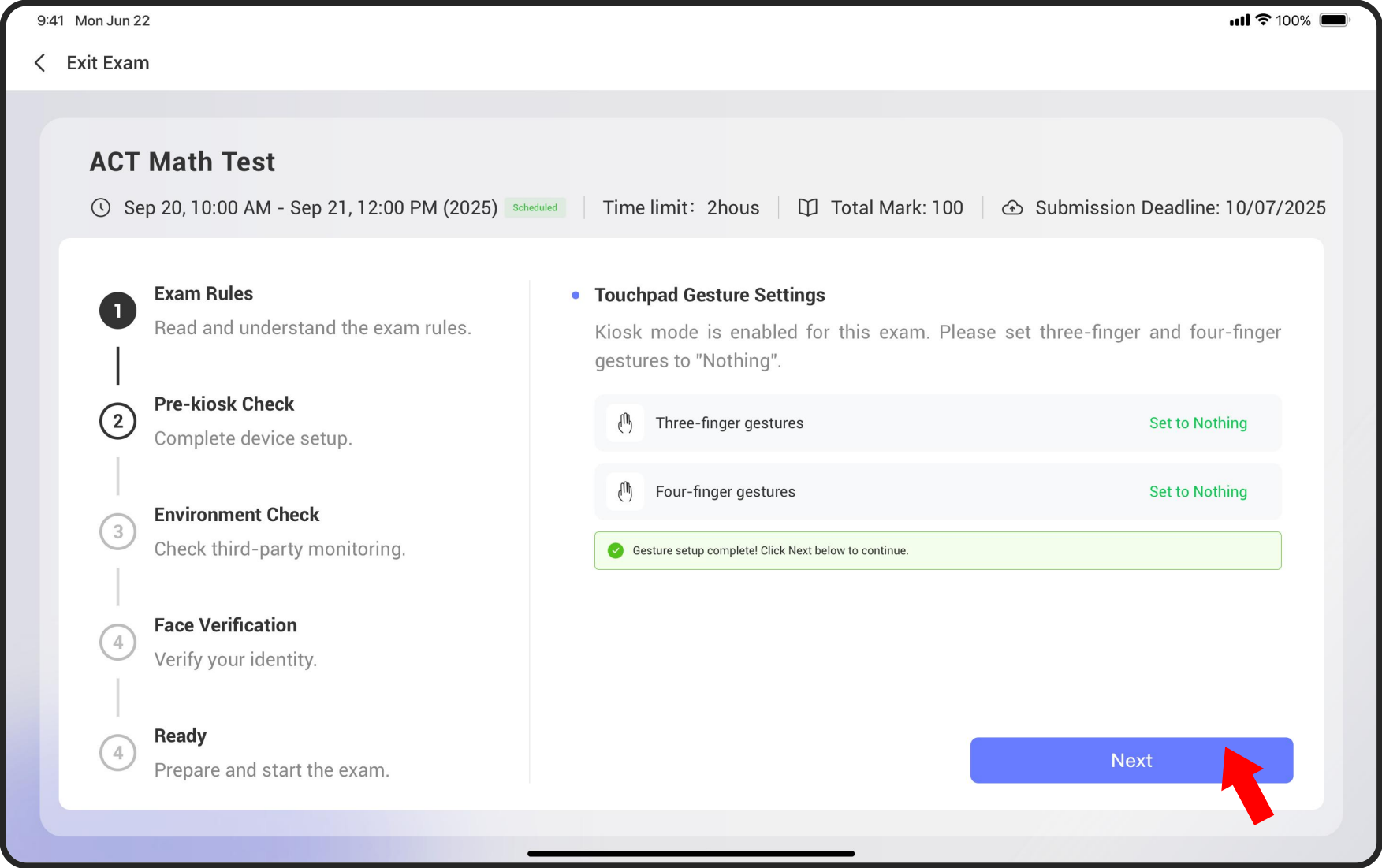
(This page appears on some laptops only. Skip if not displayed)





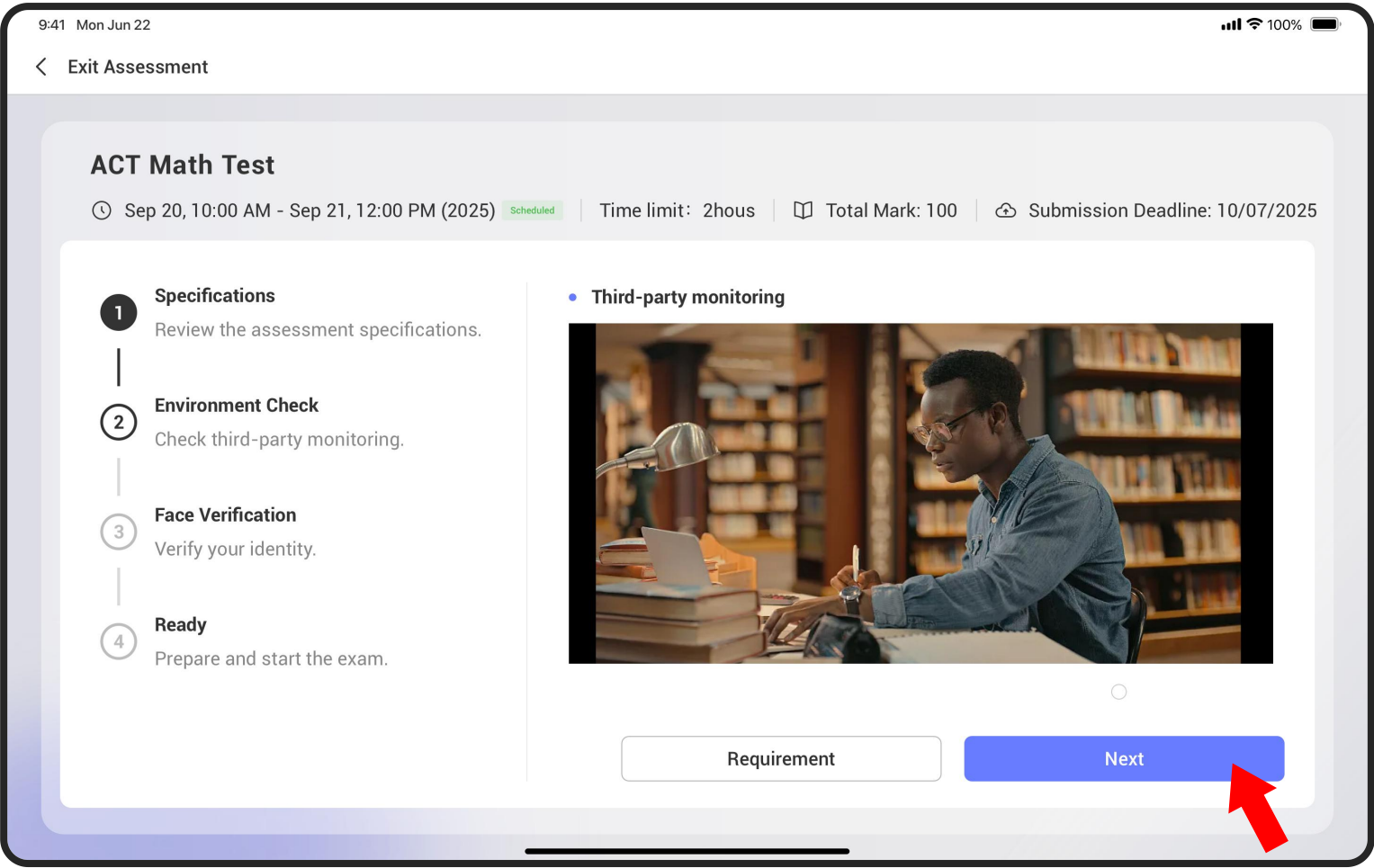
# Touchpad Gesture Verification Successful

(This page appears on some laptops only. Skip if not displayed)



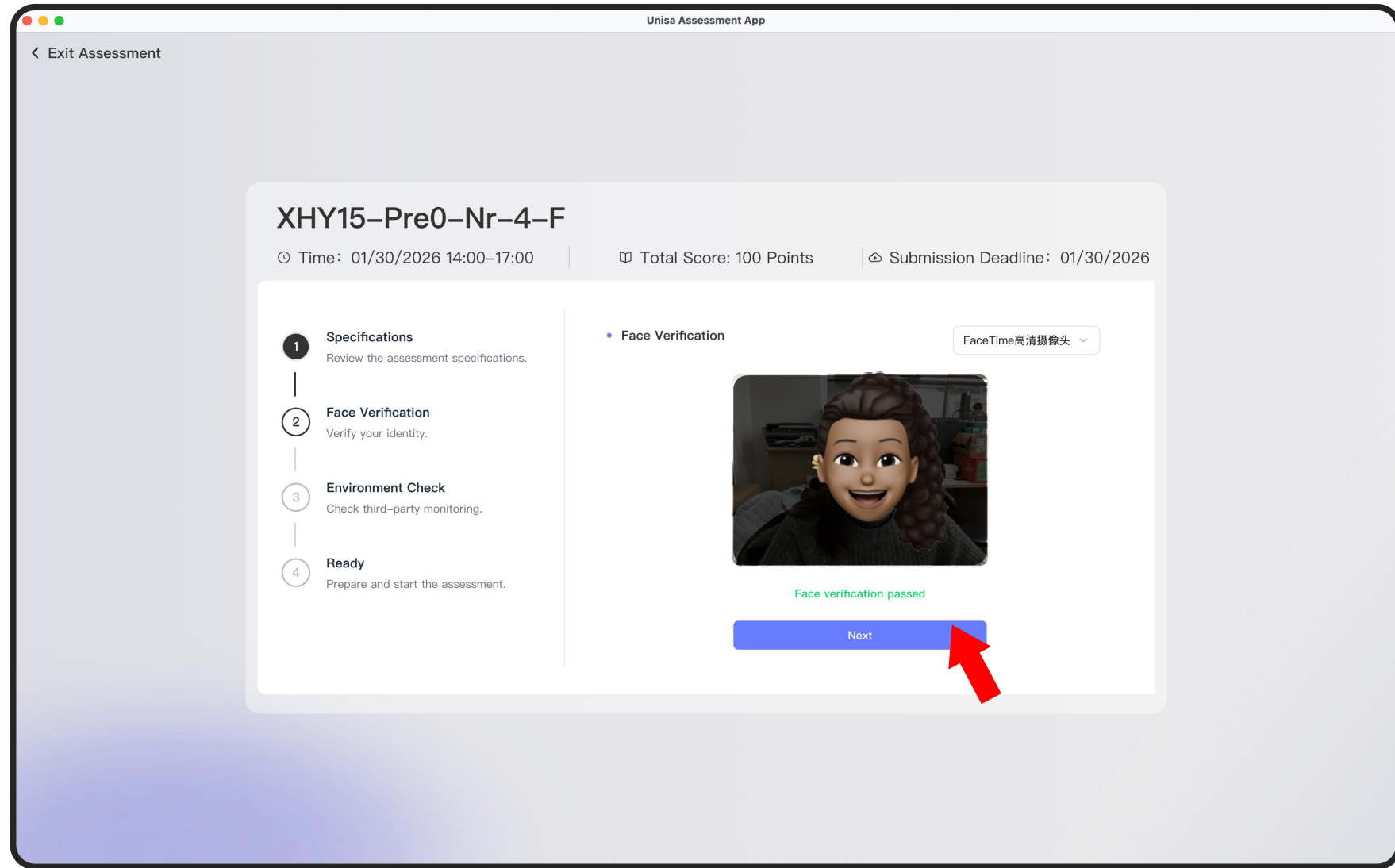
# Environment Check

(Skip if this page doesn't appear)



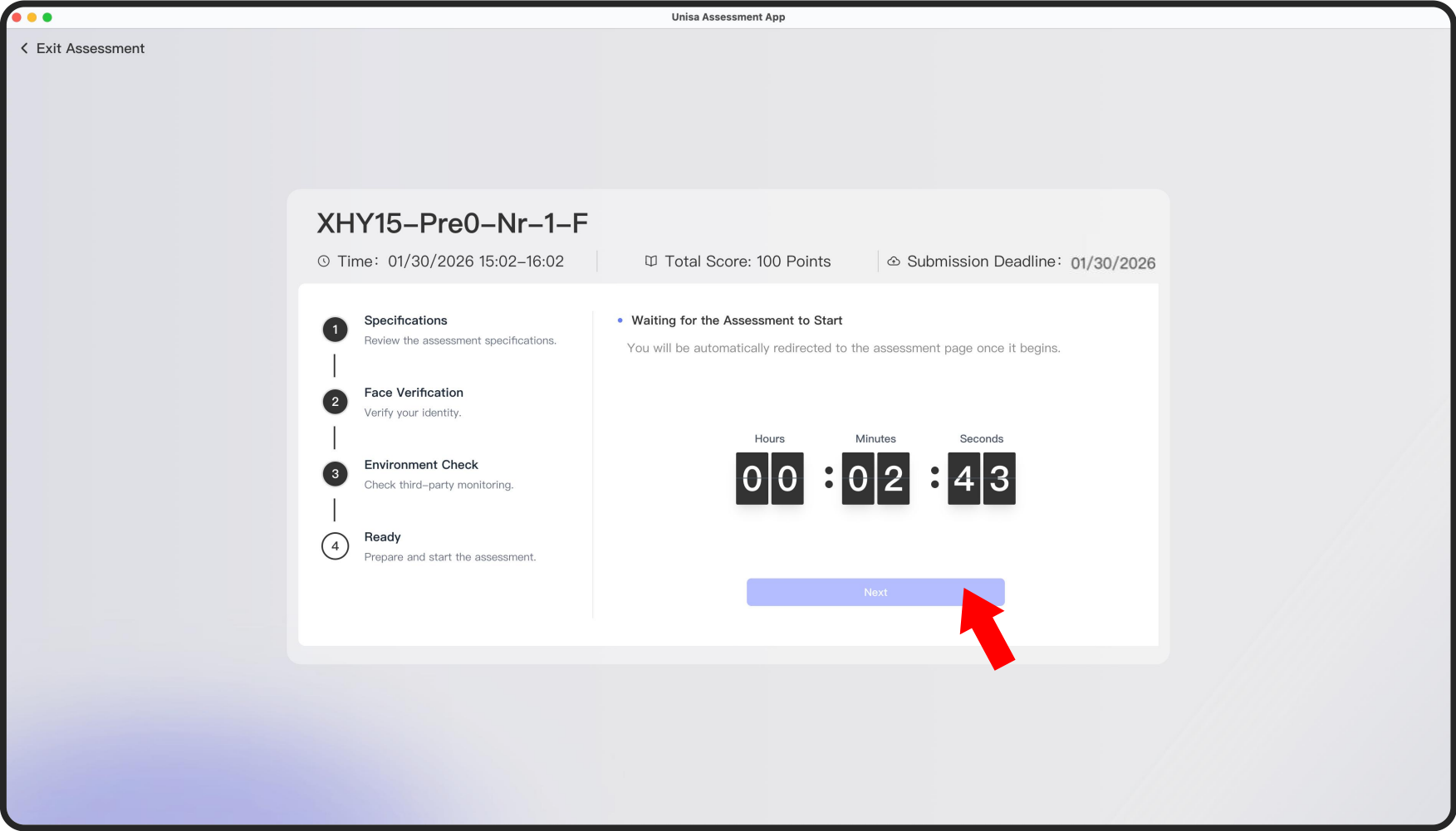
If you don't have a second camera, you can click "NEXT" to skip this verification.

# Face Verification



If you receive a verification failure message, you can still click "Next" to proceed with the assessment. This will not affect your test progress. We will conduct a secondary verification in the background.

# Ready for Assessment



When the countdown reaches 00:00:00, you will automatically enter the assessment.  
If you are not automatically redirected, please click the "Next" button

# Begin Your Assessment

Screen lock is enabled for this assessment. You will not be able to switch out of the assessment application during the test. The screen lock will be automatically released after the assessment ends.

XHY15-Pre0-Nr-4-F

Assessment Name

I.ONE(100Marks)

Aa

Time Remaining  
28:50

Conclude

Section Title

1. e.g., The process by which plants make their own food is called \_\_\_\_.

1 Please fill in the answer

Question and Answer Area  
Answer in this area

Answer Sheet

Mark for Review

Prev

1

2

3

4

5

6

Next

Assessment Rules

Font Size Adjustment

Temporary Leave Request

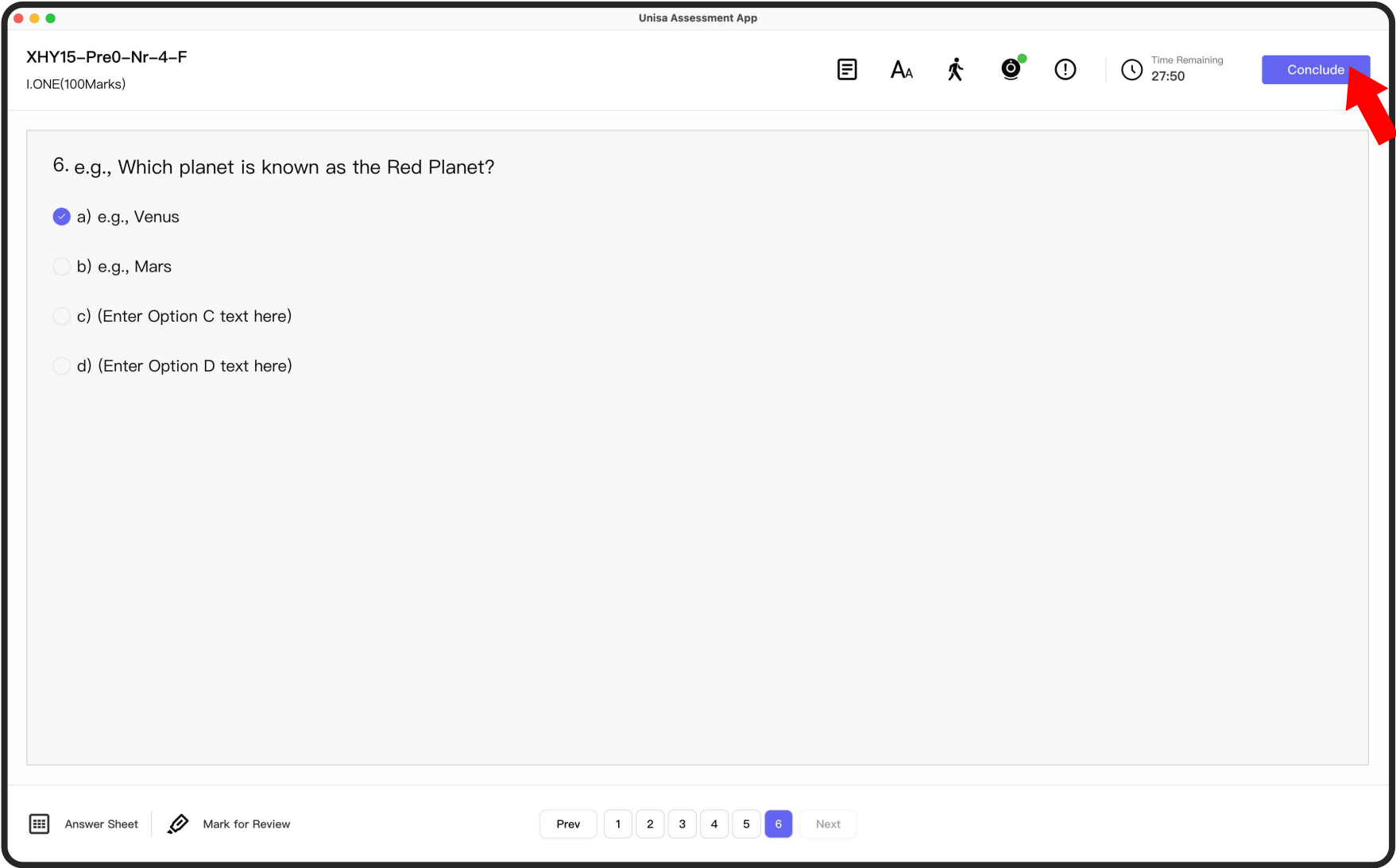
Camera Status Check(optiona)

Violation Log

End Assessment Button

Question Navigation Buttons

# Finish This Assessment



You can end the assessment early, or wait until the timer runs out for automatic completion

# Answer Summary

XHY15-Pre0-Nr-4-F

I.ONE(100Marks)

Aa

Time Remaining  
26:30

Conclude

This is the last one! Don't forget to click Conclude when you're finished. (3s)

6. e.g., Which planet is known as the Red Planet?

☒ a) e.g., Venus

☐ b) e.g., Mars

☐ c) (Enter Option C text here)

☐ d) (Enter Option D text here)

Confirm Early Conclusion

You have not completed all questions. Finalizing your assessment will prevent any further changes.

Answer Summary

Answered

5/6

Not Answered

1

For Review

0

Unanswered Questions

Question 5

☐ I have reviewed the summary above and confirmed all my answers.

Cancel and Review

Conclude Assessment

To continue with unanswered questions, please click here.

To continue with your assessment, click here.  
(Available before automatic completion only. Button disappears when time expires)

Answer Sheet

Mark for Review

Prev

1

2

3

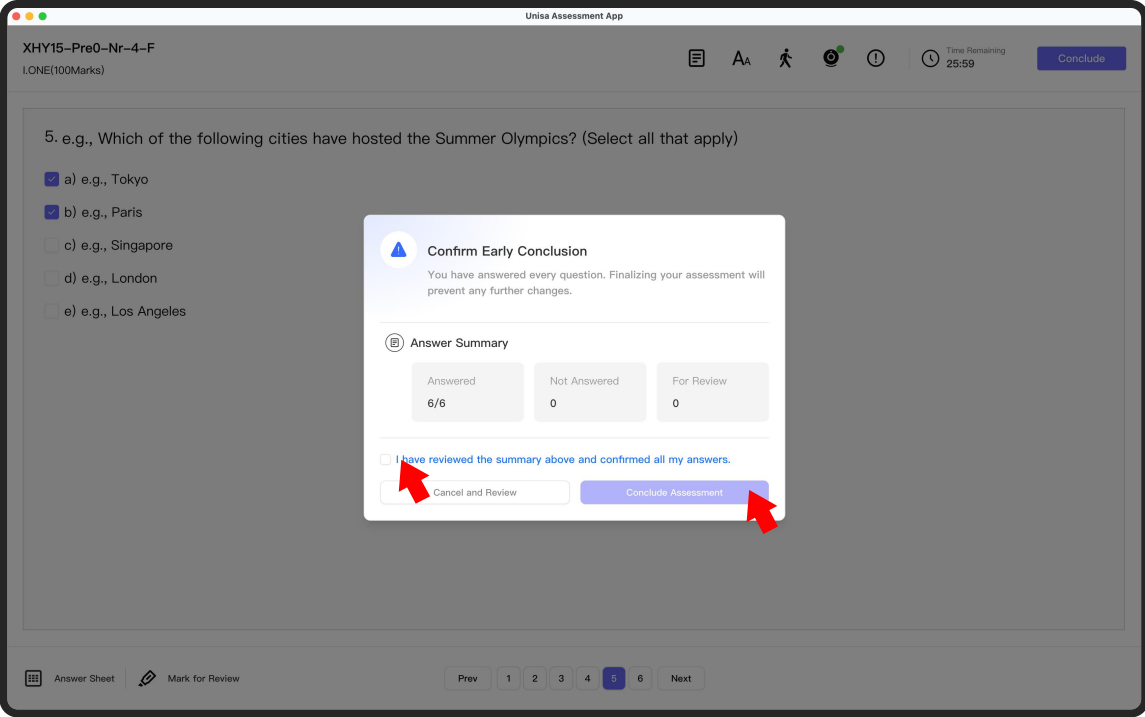
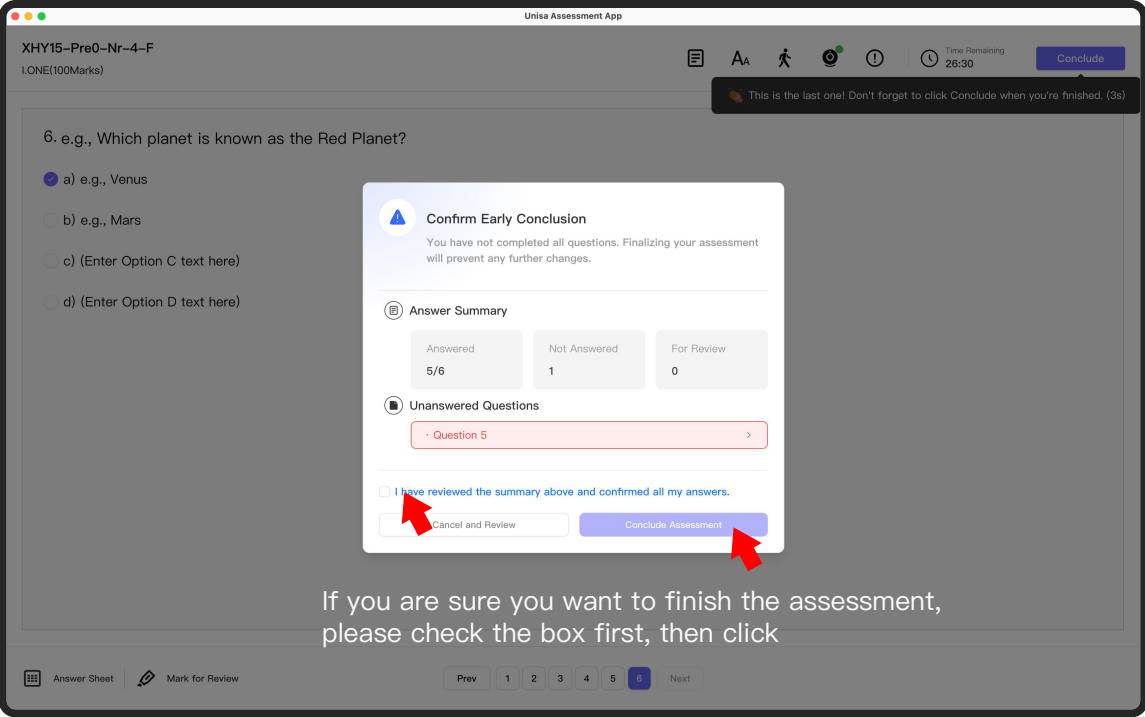
4

5

6

Next

# Answer Summary

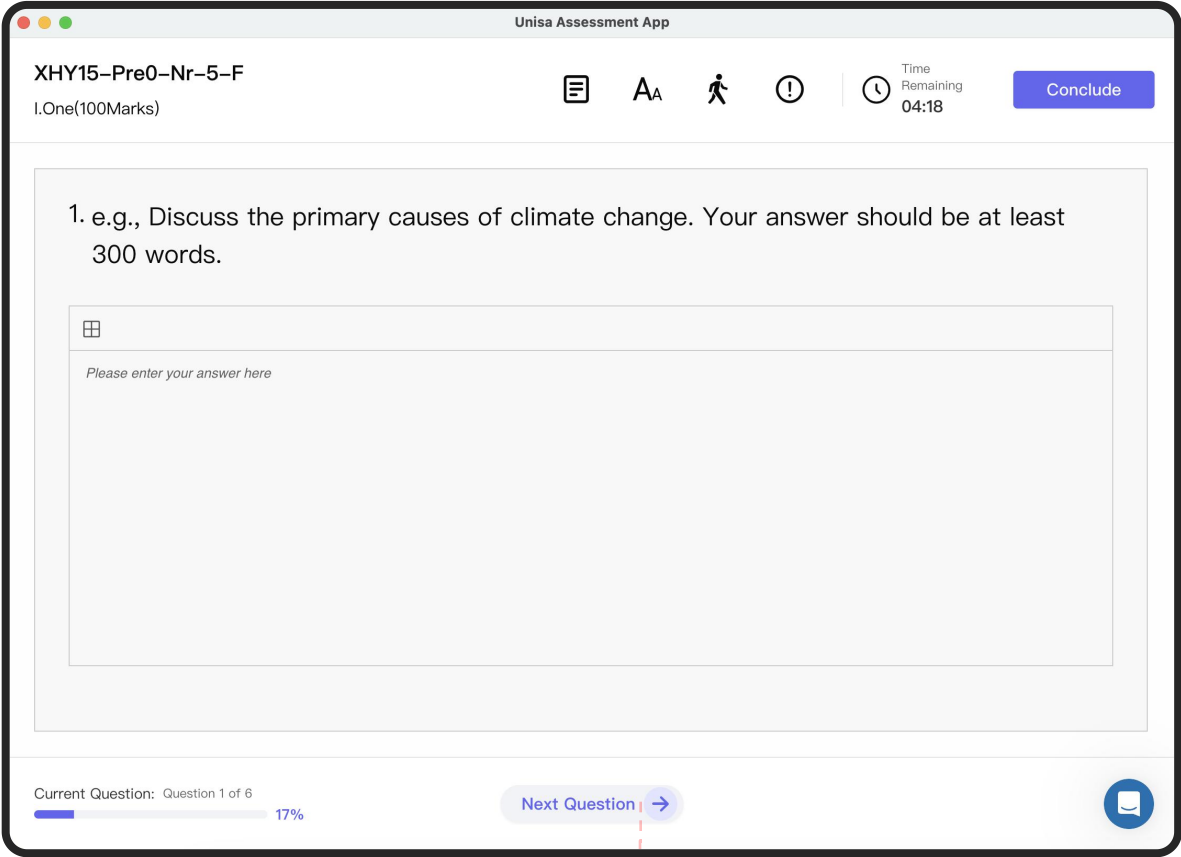




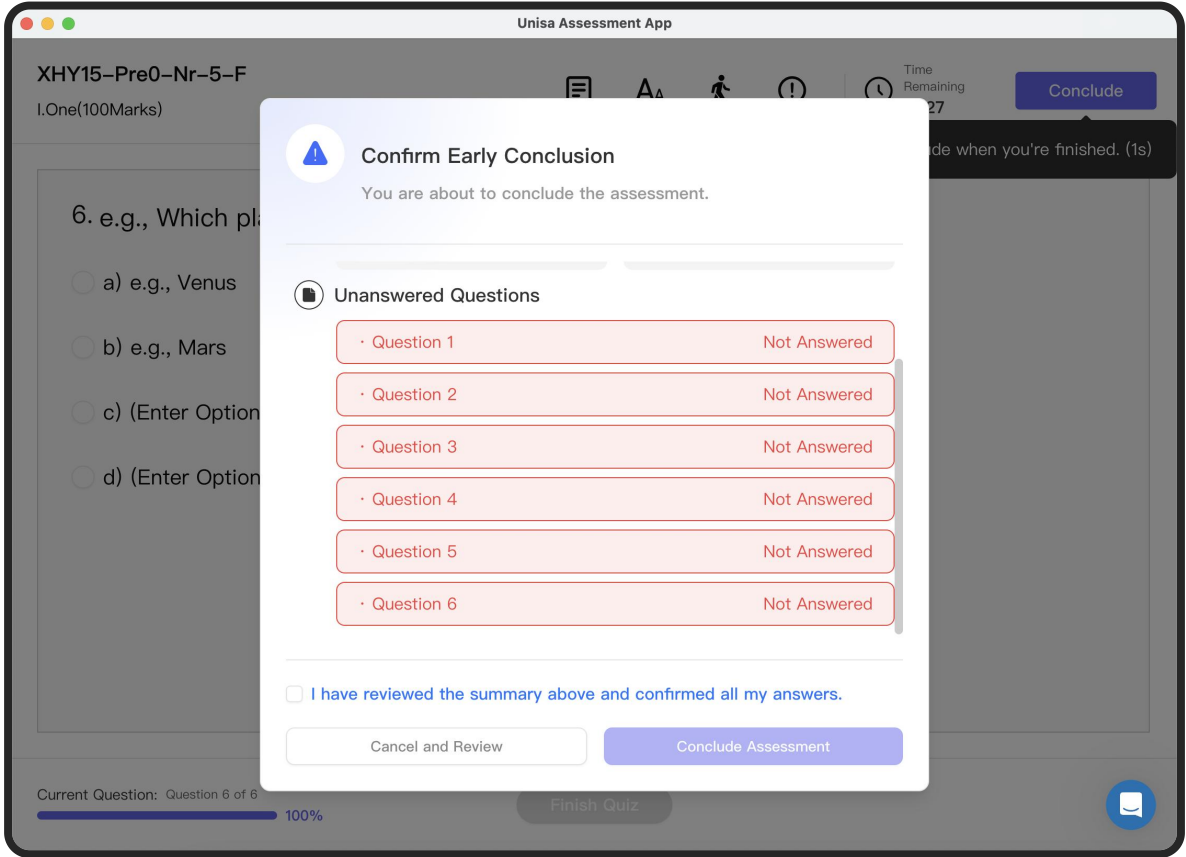
# Strict Sequence

The previous demonstration showed Free Navigation mode. Another navigation mode is Strict Sequence.

Mode characteristics: Examinees must answer questions in order. Once you proceed to the next question, you cannot return to view or modify previous answers.

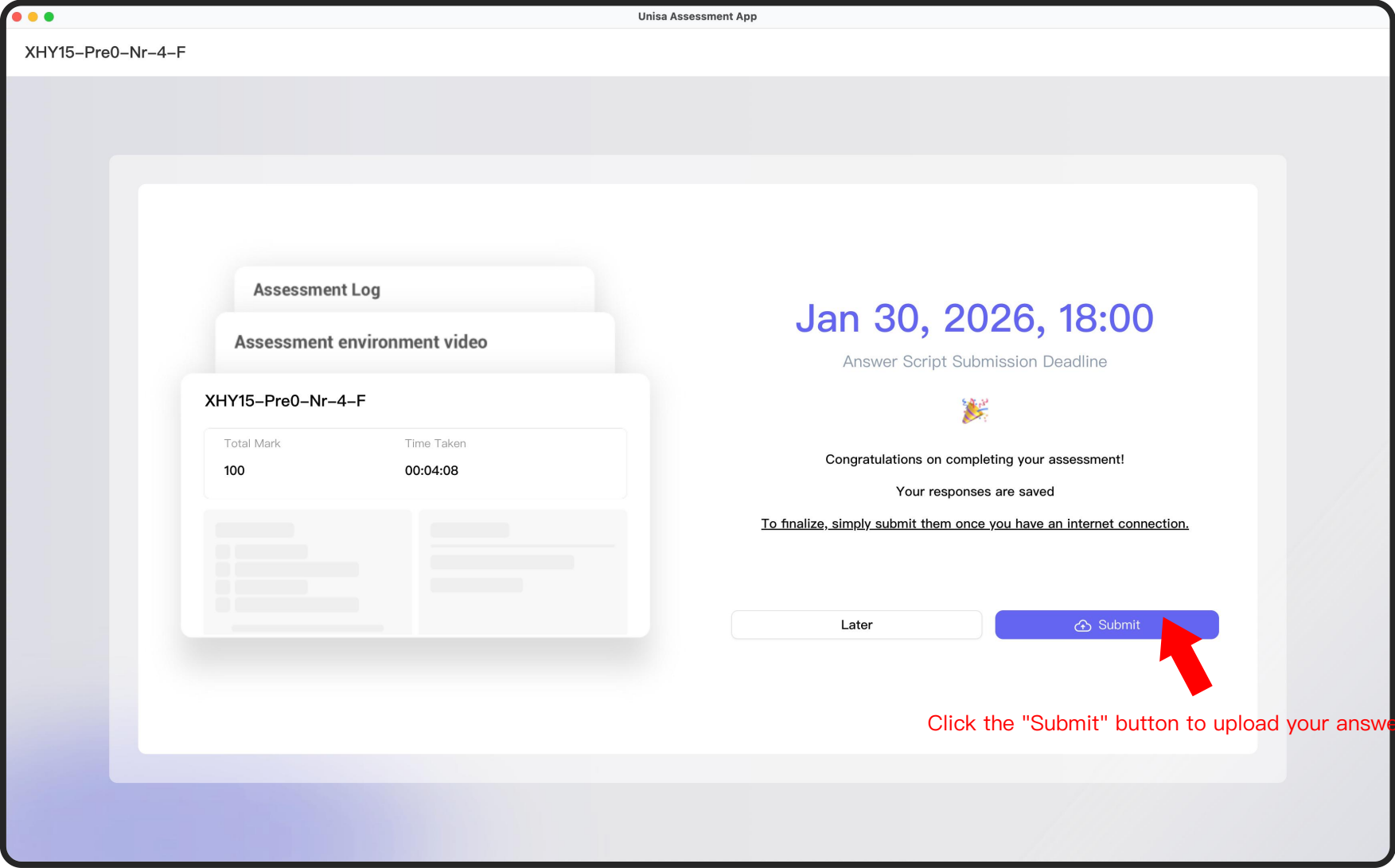


Question Navigation Buttons:  
Only "Next Question" is available



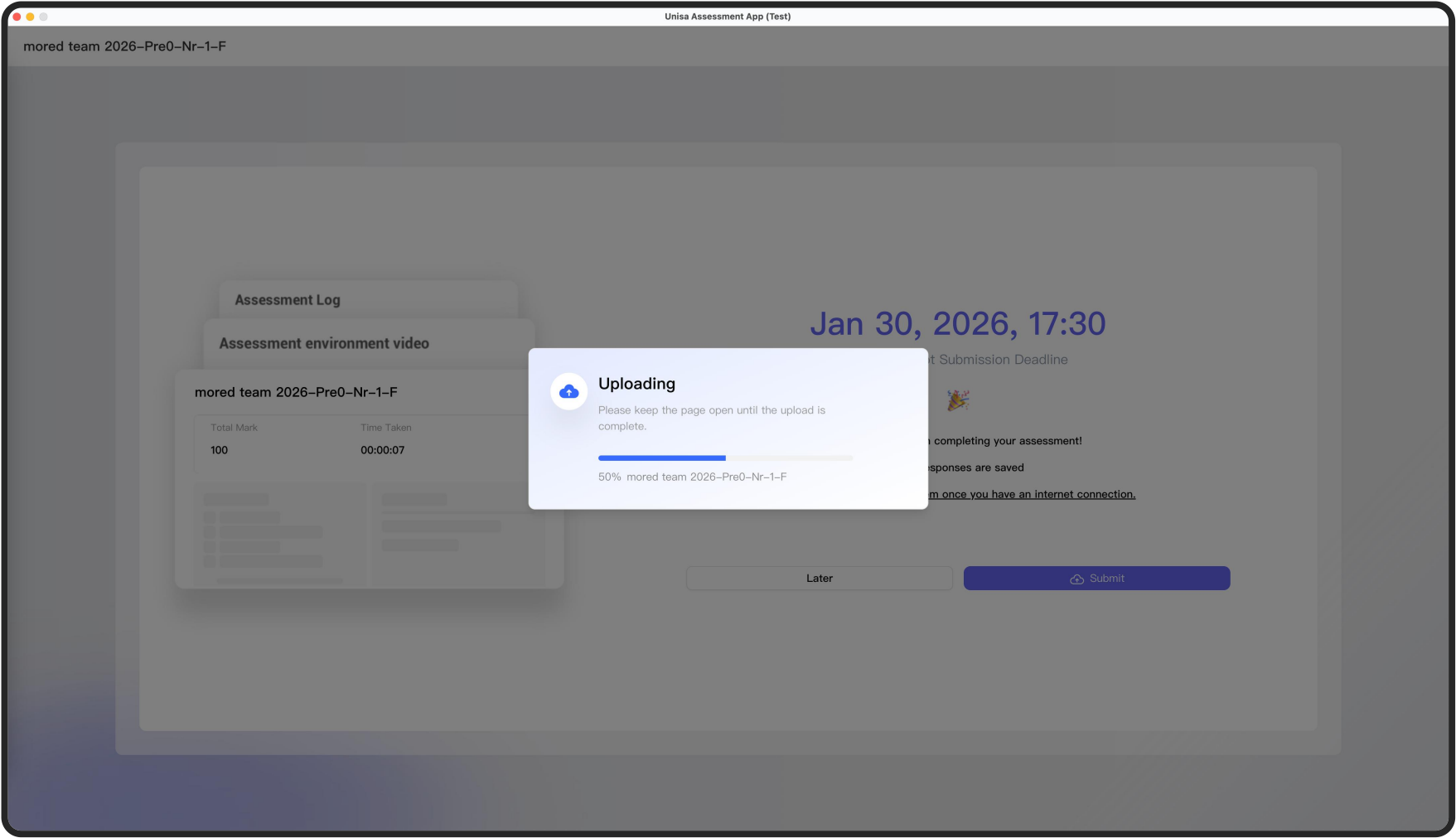
Unanswered questions: Skipped questions cannot be revisited. You can only proceed forward to complete remaining questions.

Please submit your answer



During peak periods, submission may take longer. You can click "Later" to postpone the submission. Just ensure you complete the submission before the deadline.

Keep this page open until submission is successful



# View Assessment History

UNISA

university of south africa

Dashboard

Upcoming Assessment 1

**Assessment History** 1

Module

Student Information

xhy 001

ID:xhy001

Unisa Assessment App

## Assessment History

This is your Assessment History. Here, you can review all your past assessments, analyze your results to identify strengths and areas for improvement, and track your performance trends over time.

Awaiting Submissions 1

Assessment Name

Date ALL

Awaiting Submissions

XHY15-Pre0-Nr-4-F

Submit by Jan 30,18:00 | 03:48:48

Type	Formative	Total Marks	100	Weight	10%
Assessment Time: (UTC+8) Jan 30,14:00 PM – Jan 30,17:00 PM					
<div>Flexible</div>					
Time limit	30minutes				
Module	XHY15				
Lecturer	xhy lecturer				

Submit my answer sheet

Awaiting grades

XHY15-Pre0-Nr-4-F

Type	Formative	Total Marks	100	Weight	10%
Assessment Time: (UTC+8) Jan 26,14:00 PM – Jan 26,15:00 PM					
<div>Scheduled</div>					
Time limit	1hours				
Module	XHY15				
Lecturer	xhy lecturer				

Completed

If you haven't uploaded your answer sheet yet, please ensure submission before the deadline.

Status showing "Awaiting Grades" means your submission is pending grading.

# Q&A

**Q1: I'm not sure if I'll have internet during the assessment.**

Answer: Internet is not required during the assessment. You only need internet when downloading the test paper and submitting your answers.

---

**Q2: Why can't I switch out of the assessment system during the test?**

Answer: If Screen Lock is enabled for your assessment, you can only operate within the assessment system. This will be automatically released after the assessment ends. (Note: This feature is configured by instructors, not students)

---

**Q3: What happens if I don't click submit after completing the assessment?**

You must submit your answers before the submission deadline. If you don't submit, it will be treated as if you didn't take the assessment.

---

# Q&A

**Q4: What if my computer shuts down accidentally during the assessment? Can I continue?**

Answer: Yes. As long as the assessment time hasn't expired, you can log back in and continue where you left off.

The screenshot displays the 'Unisa Assessment App (Test)' interface. On the left is a sidebar with navigation options: 'Dashboard', 'Upcoming Assessment' (highlighted with a red box and a notification badge), 'Assessment History' (with a notification badge), 'Module', and 'Student Information'. The main content area is titled 'Upcoming Assessment' and includes a sub-header 'This is your list of upcoming assessments. Here, you can view all scheduled assessments and keep track of your schedule and status at any time.' Below this, an assessment card is shown for 'xhy02-Pre0-Nr-2-F' with a status of 'In Progress'. The card details include: Type 'Formative', Total Marks '100', Weight '10%', Assessment Time 'Jan 31, 14:00 PM – Jan 31, 14:30 PM (UTC+8)' (marked 'Scheduled'), Time limit '30minutes', Module 'xhy02', and Lecturer 'lecturer haiyan'. A note at the bottom states 'Late Entry: Allowed (up to 15 min)'. A large blue 'Resume Assessment' button is at the bottom of the card, with a red arrow pointing to it.

Unisa Assessment App (Test)

UNISA | university of south africa

Dashboard

Upcoming Assessment 1

Assessment History 1

Module

Student Information

### Upcoming Assessment

This is your list of upcoming assessments. Here, you can view all scheduled assessments and keep track of your schedule and status at any time.

In Progress xhy02-Pre0-Nr-2-F

Type **Formative** | Total Marks **100** | Weight **10%**

Assessment Time: Jan 31, 14:00 PM – Jan 31, 14:30 PM (UTC+8) **Scheduled**

Time limit 30minutes

Module xhy02

Lecturer lecturer haiyan

Late Entry: Allowed (up to 15 min)

Resume Assessment

# Q&A

## Q5: What if I'm late for the assessment?

Answer: Late arrival policies vary by assessment. Please check your specific assessment schedule, which will indicate whether late entry is permitted.

If you arrive after the allowed late entry period, you will be marked as absent.

---

## Q6: I didn't download the test paper in advance. Can I still take the assessment after it has started?

Yes, as long as you download the test paper before the late entry deadline, you can still participate in the assessment.

---

Upcoming

xhy02-Pre0-Nr-2-F

Type **Formative** | Total Marks **100** | Weight **10%**

Assessment Time:  
(UTC+8)

Jan 31,14:00 PM – Jan 31,14:30  
PM

Scheduled

Time limit

30minutes

Module

xhy02

Lecturer

lecturer haiyan

Late Entry: Allowed (up to 15 min)

Download Assessment

# Q&A

**Q7: I completed the assessment but accidentally exited during submission. Can I still submit my answers?**

Yes, you can still submit. In your Assessment History, find the assessment showing "Re-Package" option and repackage your answer sheet. Once repackaged, click "Submit" before the submission deadline.